

www.Rc-Help.com

**This is the RCH Edge 540 BETA 2.0
Try it out and let me know what you think.**

This Line Is 5" Long

The red lines on each page are registration lines to let you know where to cut the paper. They also help you align each page.

Printing:

Disable page scaling. If you still can't get the lines to match up,
print the pages as Borderless.

Motor: Exceed Rocket 2215-1300

Prop: 11x5.5

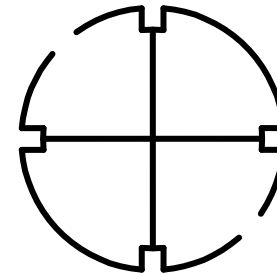
ESC: Exceed Proton 30a

Battery: 1000mah 3s 30c

Servos: T-Pro 9g

Control Horns: Dubro Small

Control Rods: .047"



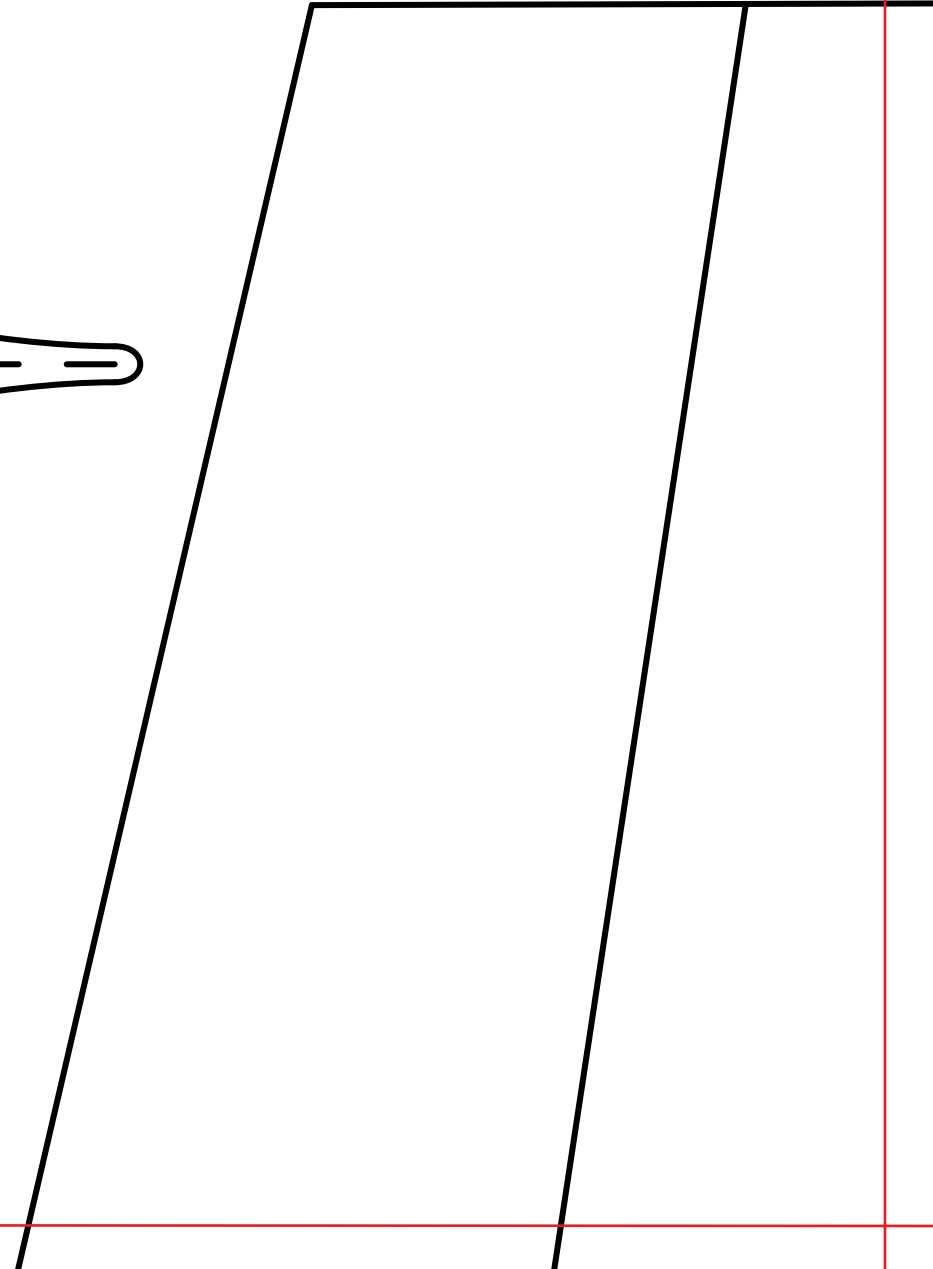
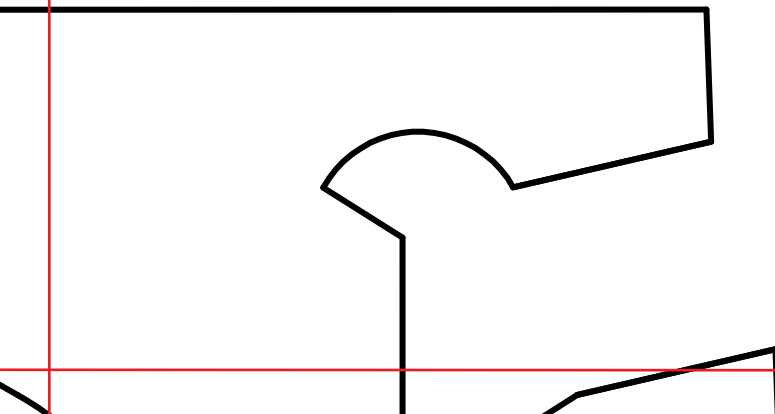
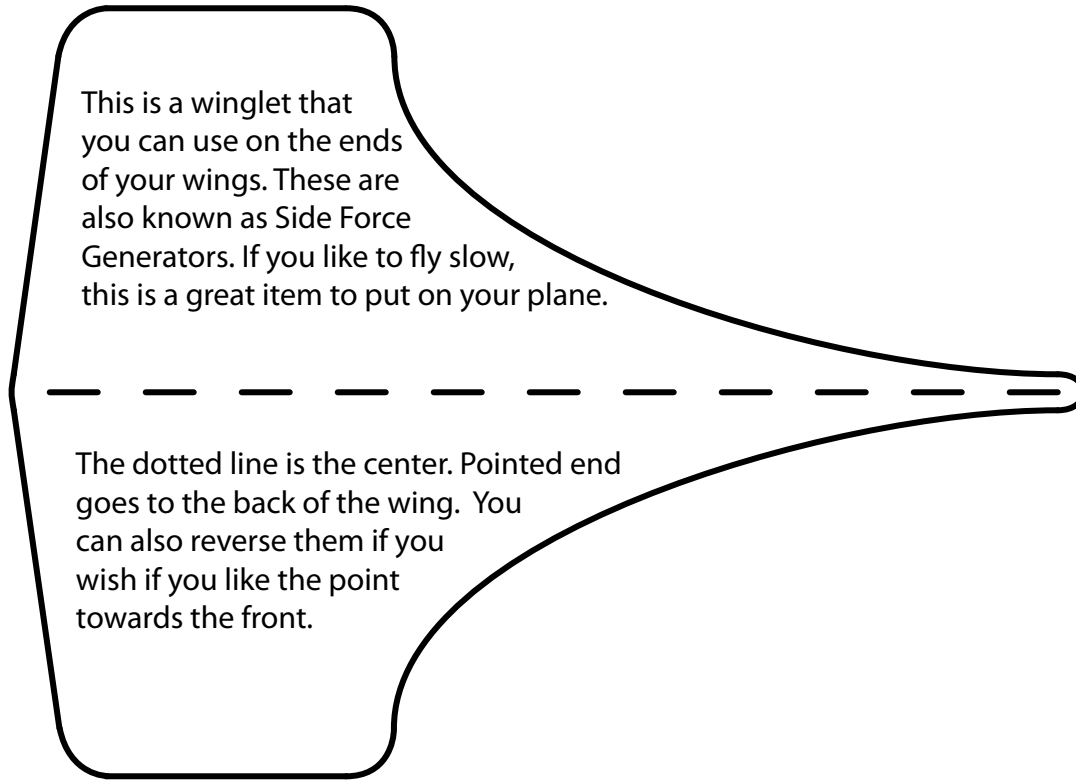
Motor Mount
1/8" Plywood

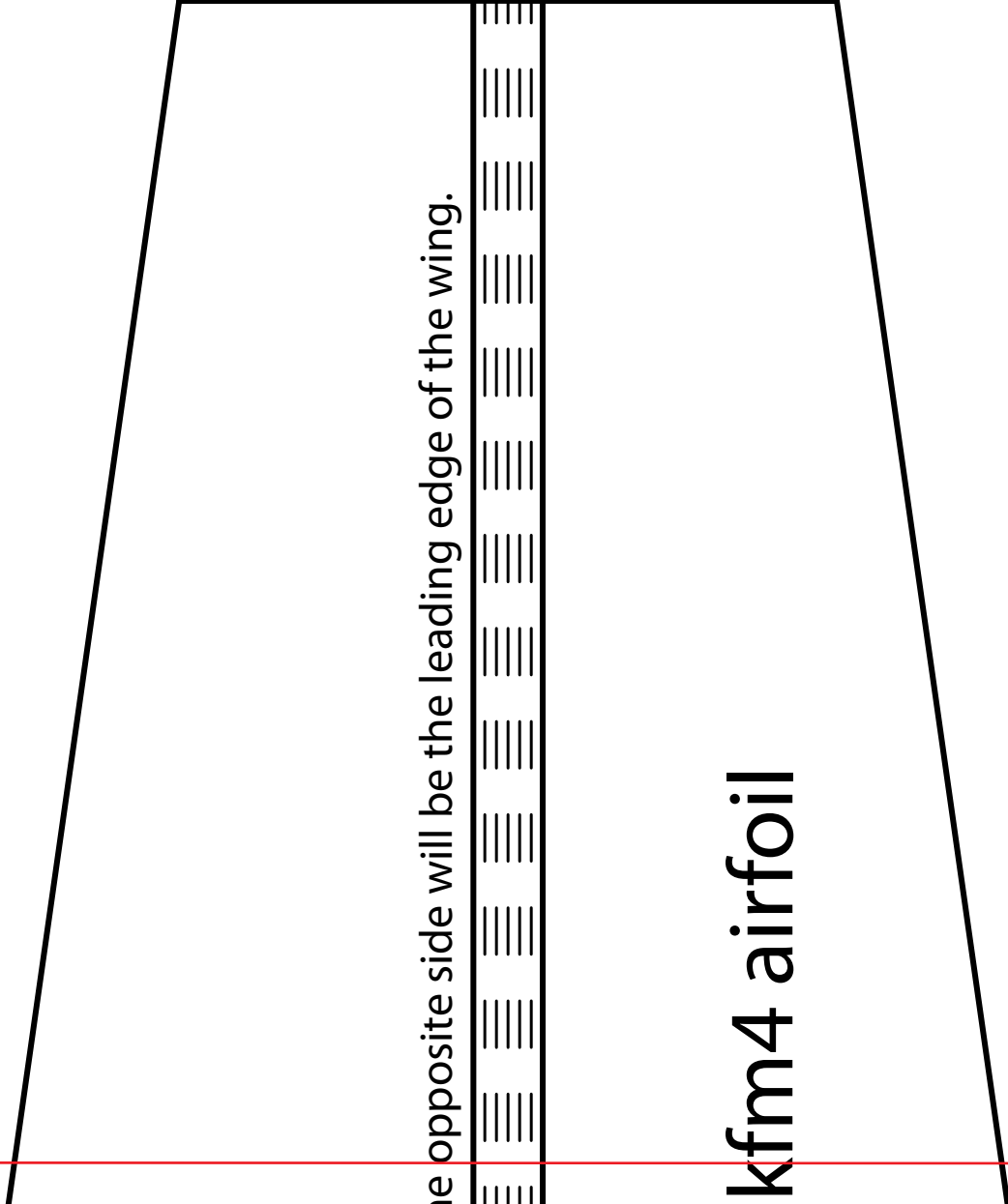
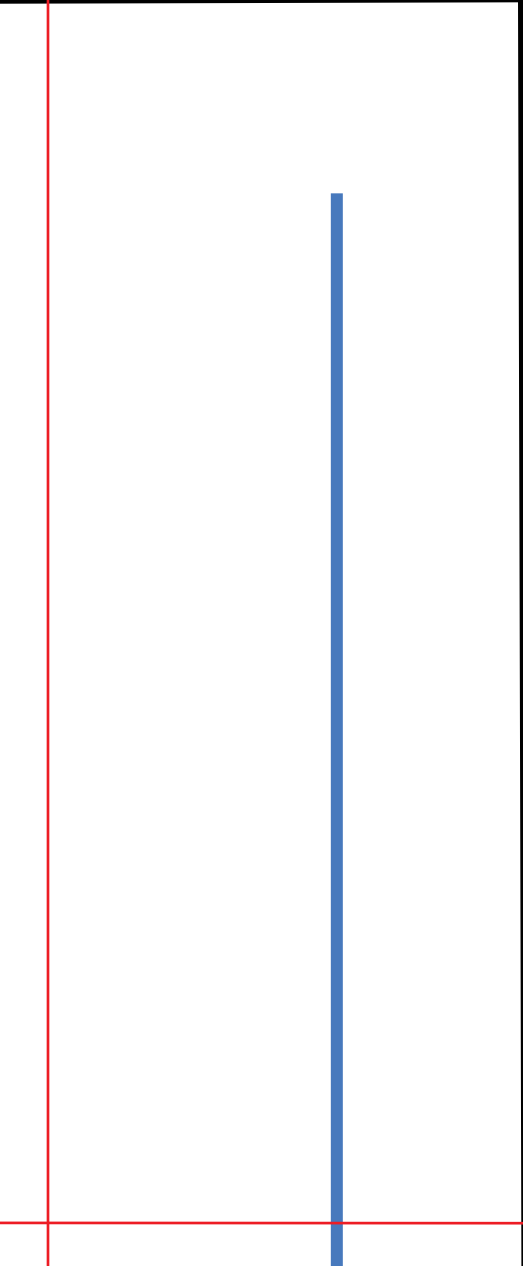
If you use these winglets, make sure to cut the ailerons so that they clear the SFG's.

All you have to do is remove 1/16" from the tip of the aileron so that it doesn't rub.

This is a winglet that you can use on the ends of your wings. These are also known as Side Force Generators. If you like to fly slow, this is a great item to put on your plane.

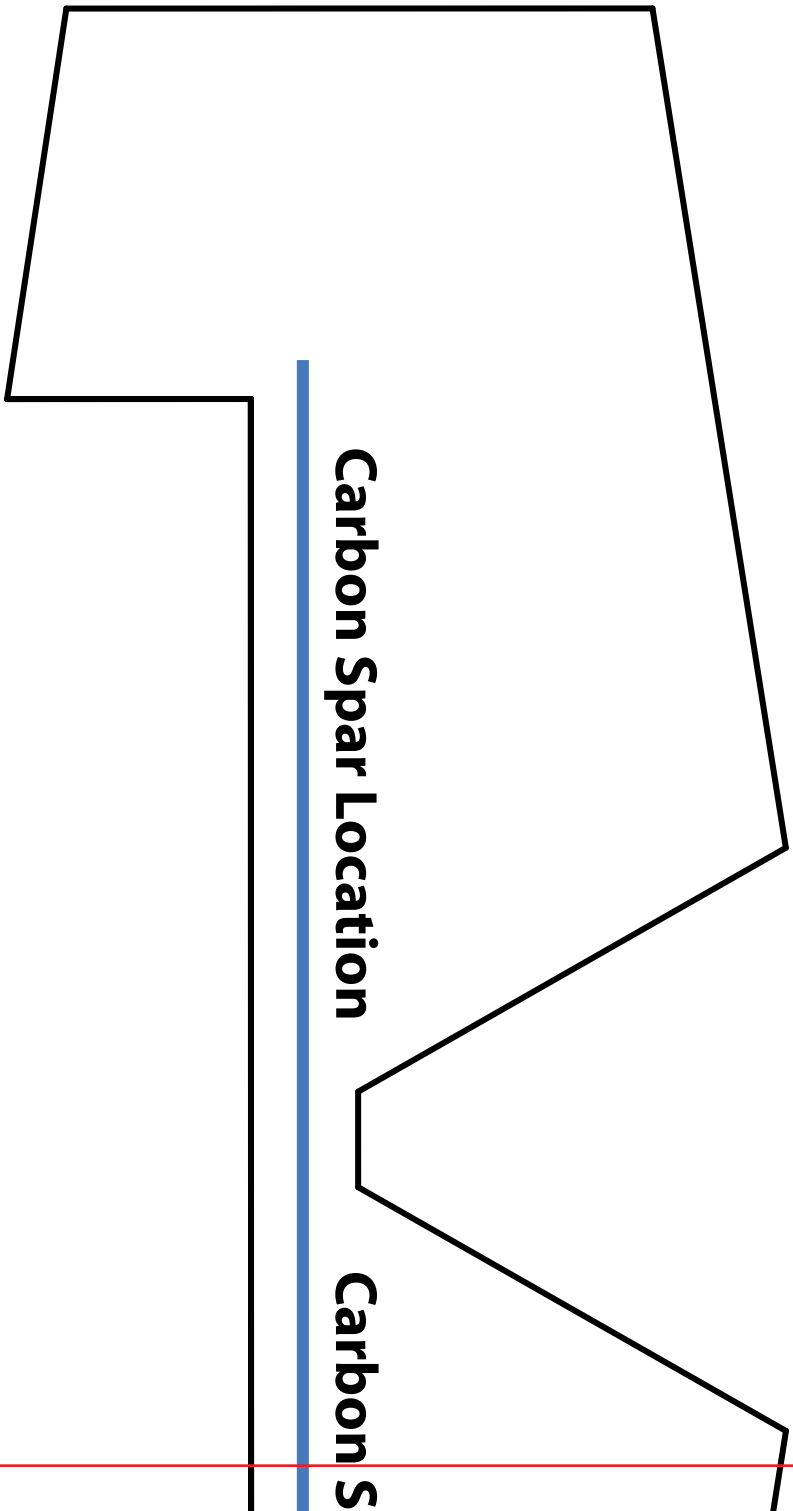
The dotted line is the center. Pointed end goes to the back of the wing. You can also reverse them if you wish if you like the point towards the front.





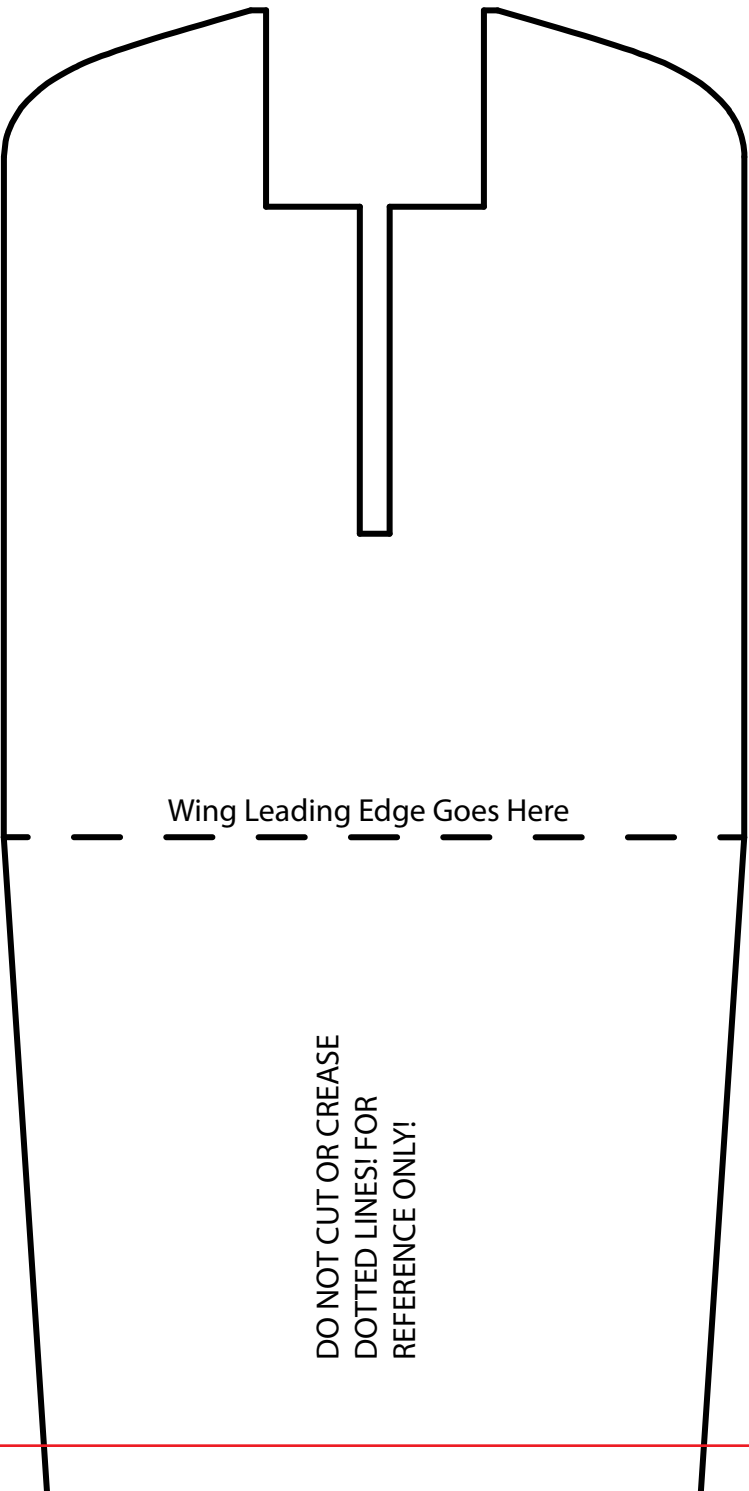
the opposite side will be the leading edge of the wing.

kfm4 airfoil



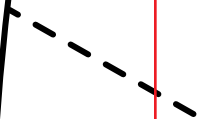
Carbon Spar Location

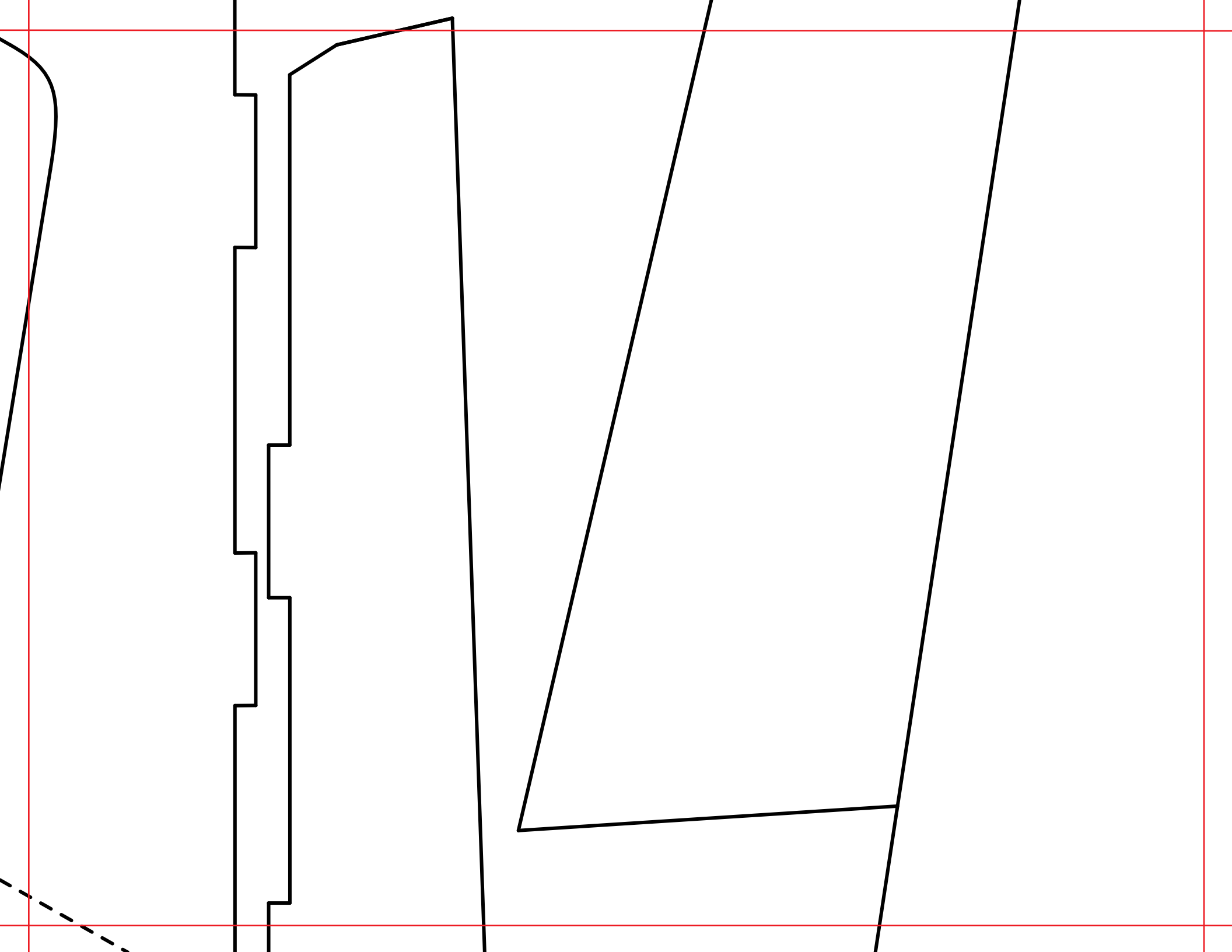
Carbon S



Wing Leading Edge Goes Here

DO NOT CUT OR CREASE
DOTTED LINES! FOR
REFERENCE ONLY!





Only. Cover The Spar With kfm4 Airfoil

m kfm4 airfoil

from will go against the wing, the curved area where you left the paper on the op



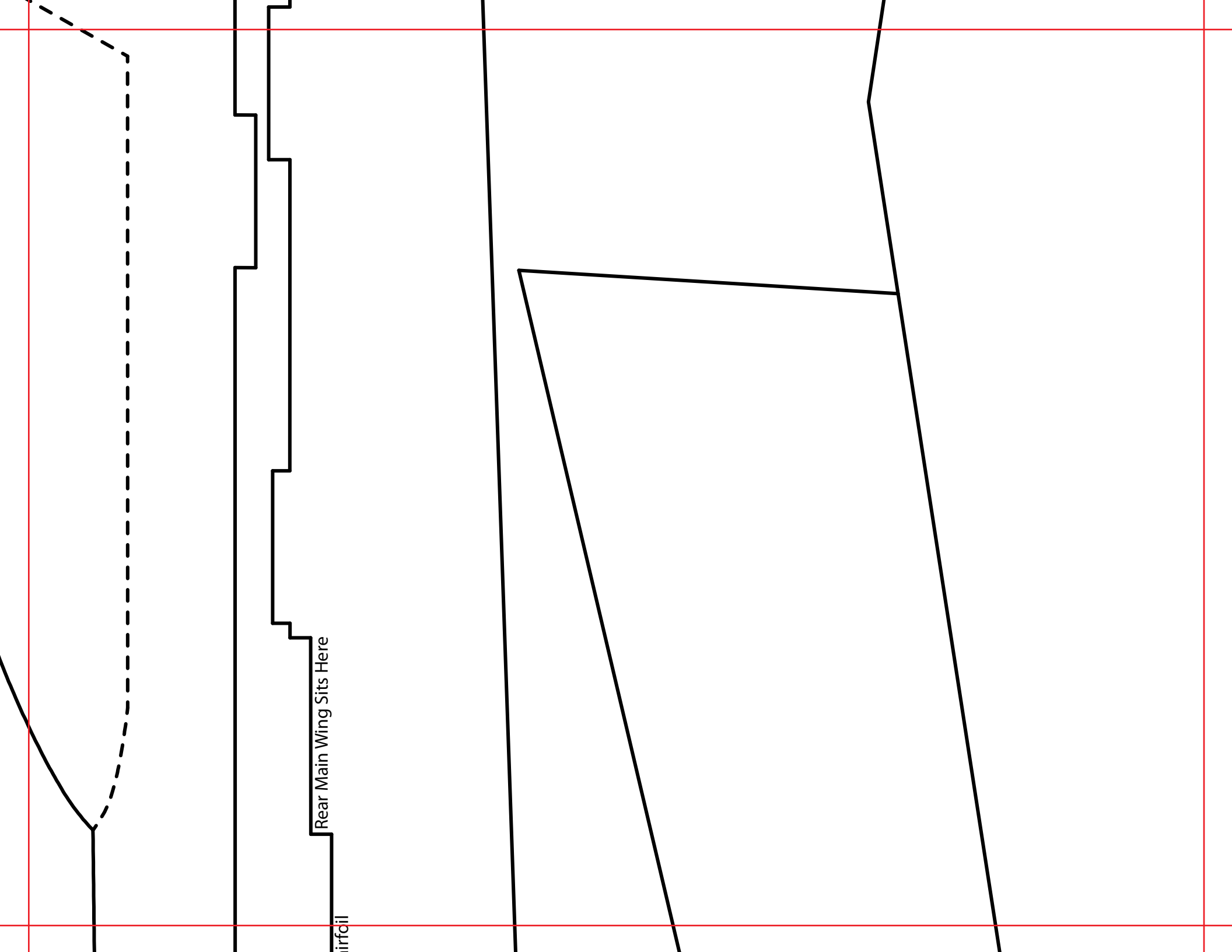
This is the Top Right kfr

on Spar Location

Rear Of kfm4 Airfoil

Rear Of Wing Goes Here



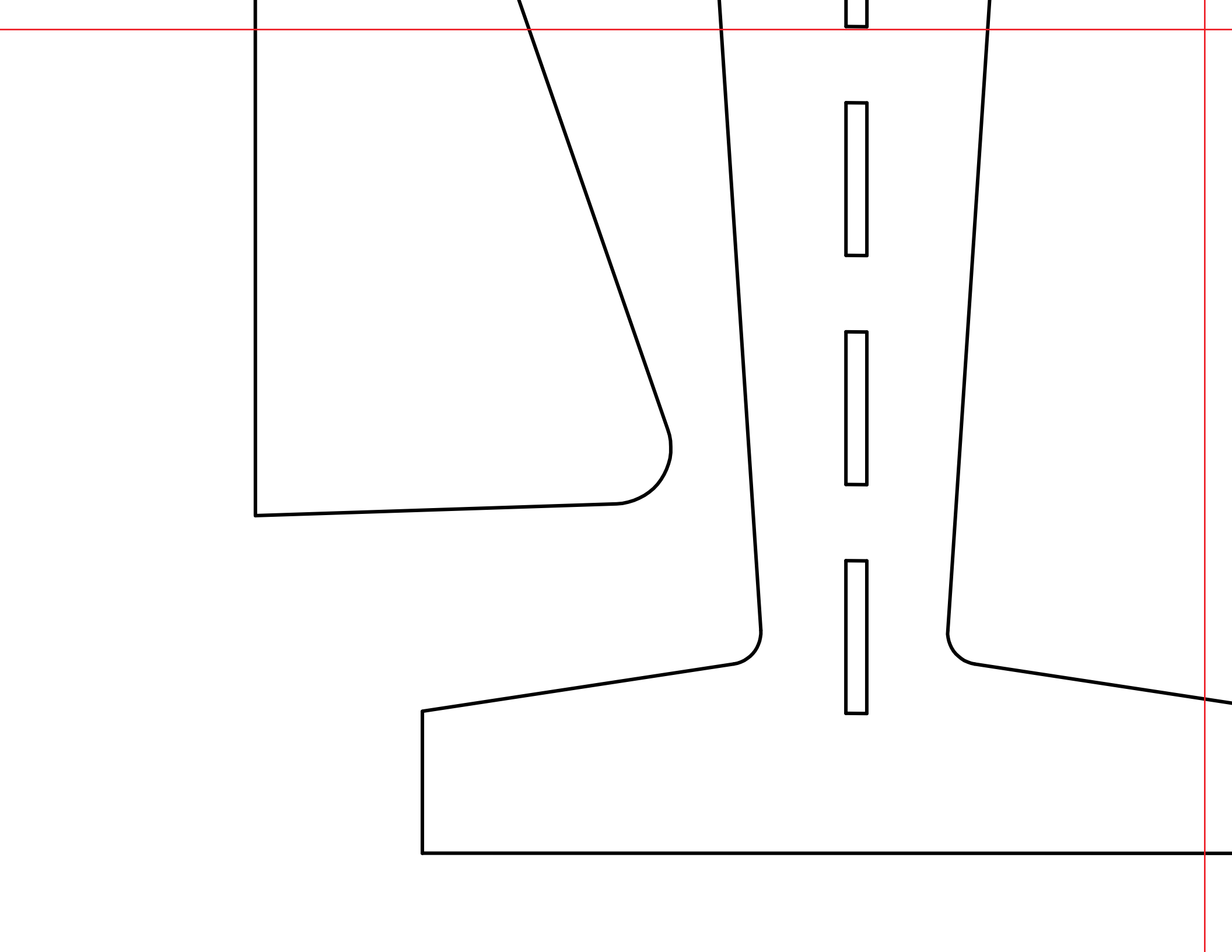


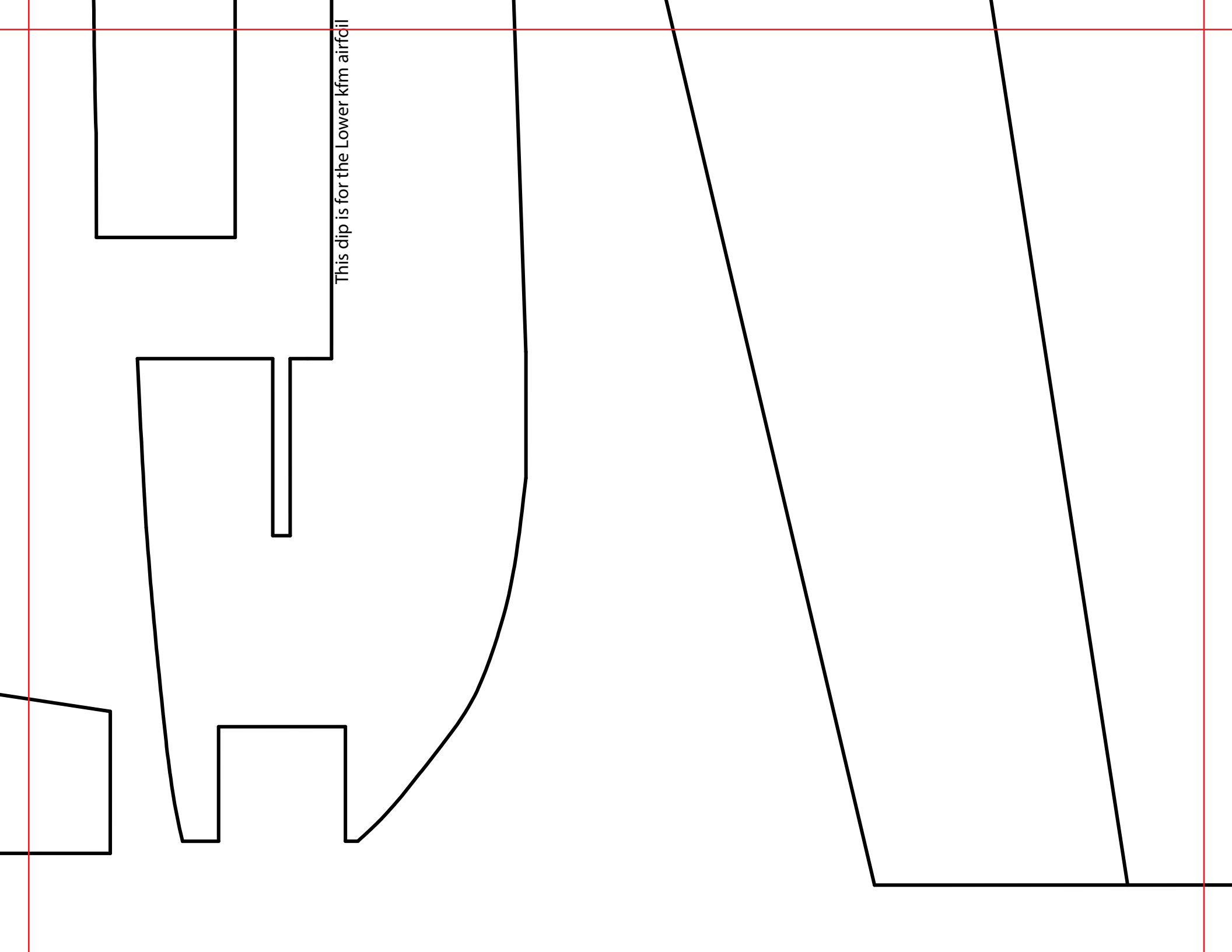
Carbon Spar Location Embedded In Main Wing On

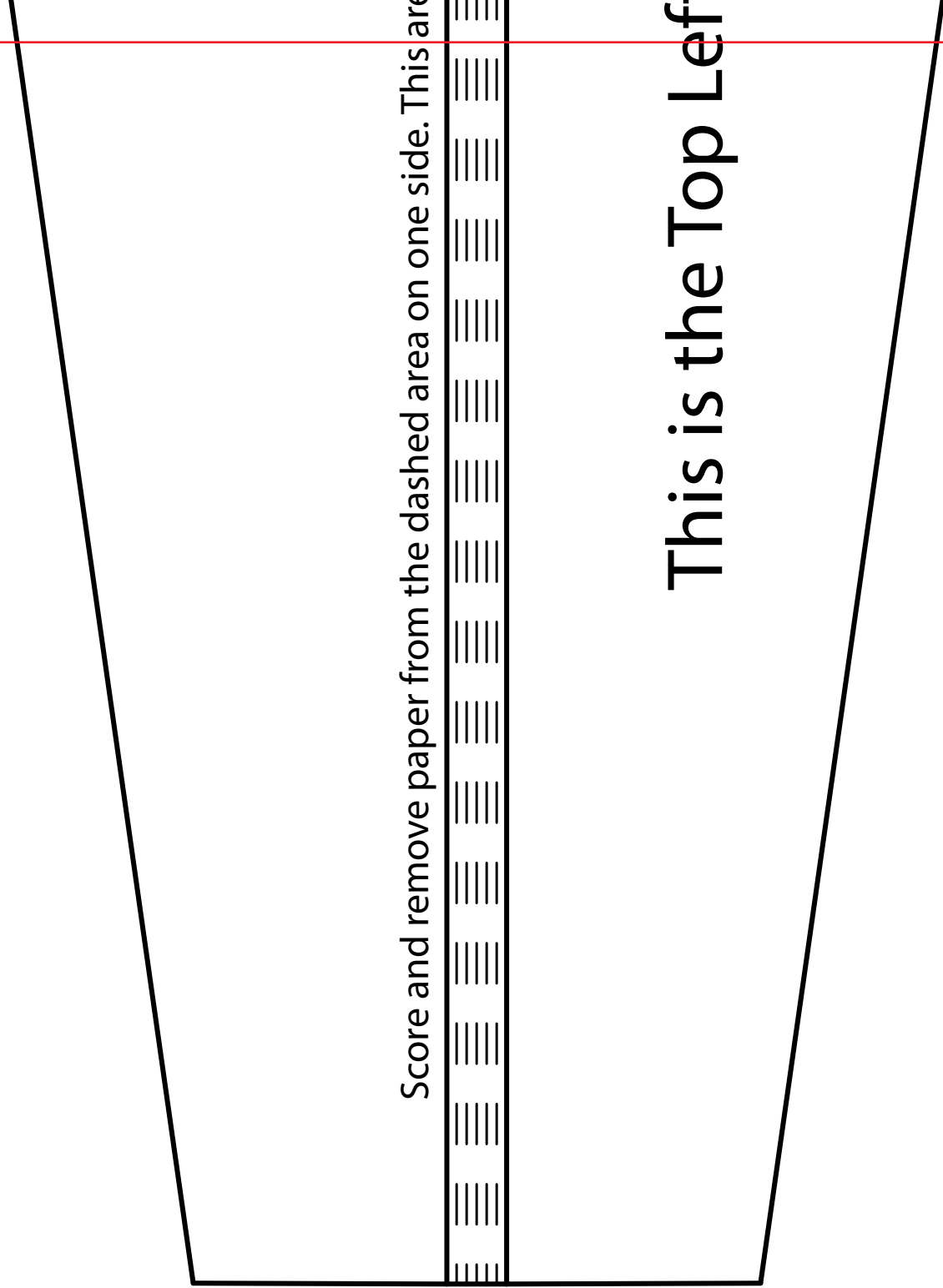
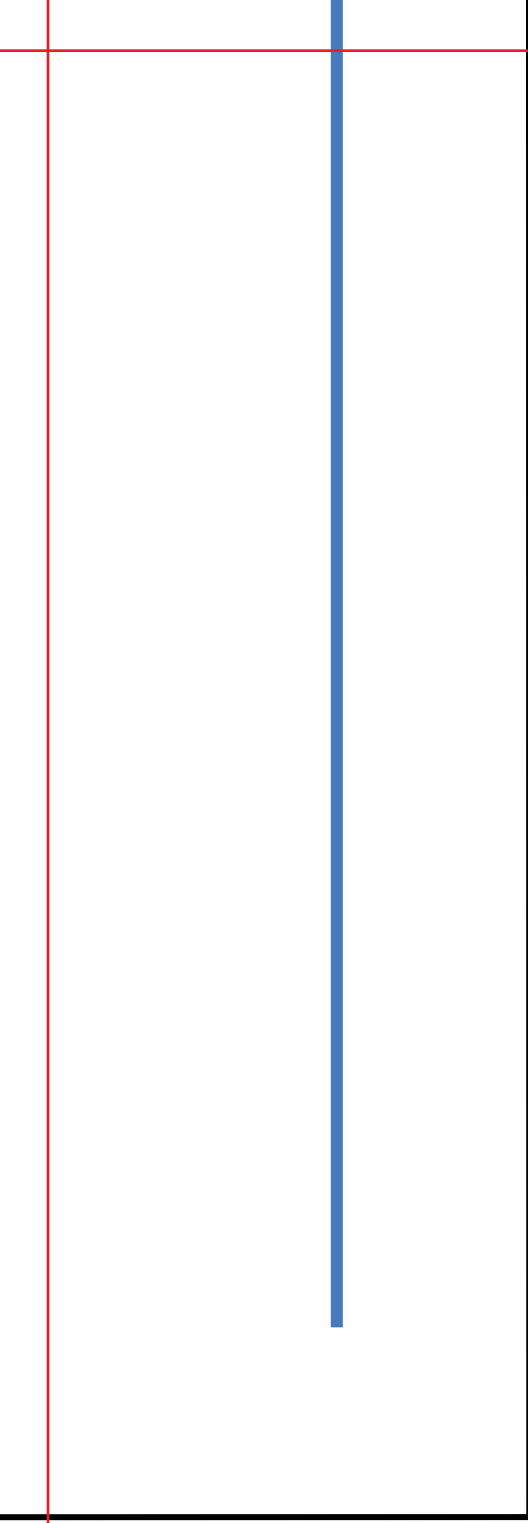
This is the bottom

This area will be the leading edge of the wing. The area you removed the paper from

Left kfm4 airfoil







Score and remove paper from the dashed area on one side. This area



This is the Top Left